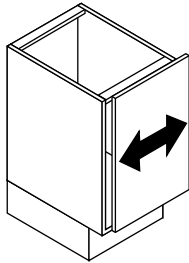


Hinge Adjustments, Standard/Full Overlay, Cup Hinge

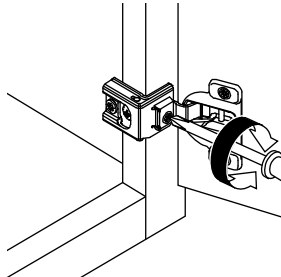
Cam Side Adjustment



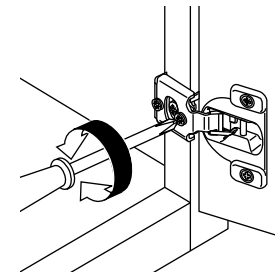
Rotate front screw counter-clockwise to increase door overlay, clockwise to decrease.

Range = (+ or - 1/16")

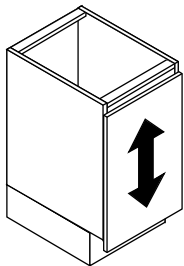
Full Overlay



Standard Overlay



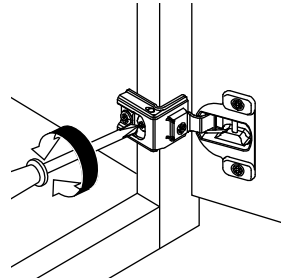
Height Adjustment



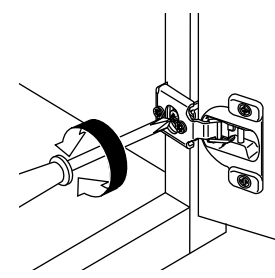
Loosen center screw. Adjust door to position and tighten screw.

Range = (+ or - 3/32")

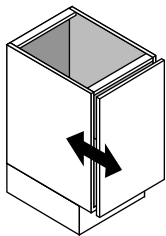
Full Overlay



Standard Overlay



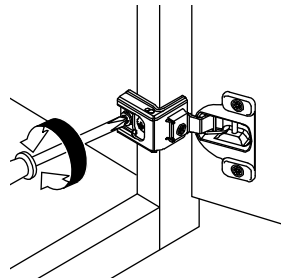
Cam Depth Adjustment



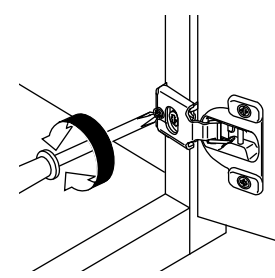
Rotate back screw to counter-clockwise to increase door gap, clockwise to decrease.

Range = (-1/32"/+3/32")

Full Overlay



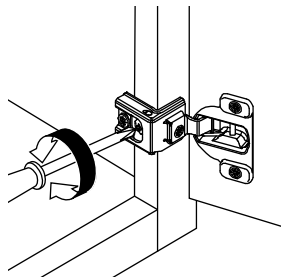
Standard Overlay



Door Removal

Rotate mounting screw counter-clockwise to remove hinge from cabinet.

Full Overlay



Standard Overlay

